

WHEN HUMANITY FAILS

For more information on hosting the exhibition:

BARRY MASE
Marketing Director
 Afikim Foundation
 212-791-7450
 barry@afikimfoundation.org

ONE SOUL: WHEN HUMANITY FAILS exhibition is an introduction to the events that led to the creation and eventual liberation of the concentration camps of World War II.

Through archival photographs and film footage, personal audio testimonies, and interactives, audiences witness society's failure and are asked to consider the responsibility of individuals and their communities in the upholding of human rights.

The exhibition illustrates the tragic history of the camps but also the heroic stories of liberation and survival that marked their end.

EXHIBITION VENUES IN MARCH & APRIL

March 1 - 9	East Carolina University Greenville, NC
April 1 - 24	Magen David Yeshiva Brooklyn, NY
April (dates TBD)	Jewish Federation Vineland, NJ
April 11 - 15	University Of Oregon, Hillel Eugene, OR
April 13 - May 14	JCC on the Palisades Tenafly, NJ
April 14 - June 16	The Queens Library Queens, NY
April 16 - May 1	Bronx Community College Bronx, NY
April 17 - 22	Leon County Public Library Tallahassee, FL
April 20 - 27	University of Penn - Hillel Philadelphia, PA

ONGOING EXHIBITIONS

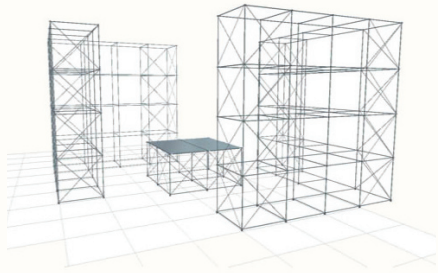
National Infantry Museum Fort Benning, NC
Patton Museum of Cavalry and Armor Fort Knox, KY
1st Armored Division Museum Baumholder, Germany
Fort General George Meade Museum Fort Meade, MD
Don F. Pratt Museum Fort Campbell, KY
Yuma Proving Grounds Heritage Center Yuma, AZ



above: exhibition booklet, When Humanity Triumphs

left: illustrations of exhibition components featuring large imagery, interactives, and documentary video

EXHIBITION PLAN *provided for space requirements*



The exhibition is constructed with a lightweight aluminum frame in 3 structural units, shown below as A, B, and C. Units A and B are 'L-shaped' walls that are identical in size and shape. These walls are designed to face one another so that an interior space is created (*see illustration at left*). The walls are 8' in height and as shown below, are 8' in length and width. The walls have an interior depth or thickness of 2'. The C unit is a centerpiece that stands 3' in height and has a length and width of 4'. A minimum of 4' of walking space is required between the centerpiece and the L-walls. A minimum of 6' around the installation is suggested.

